

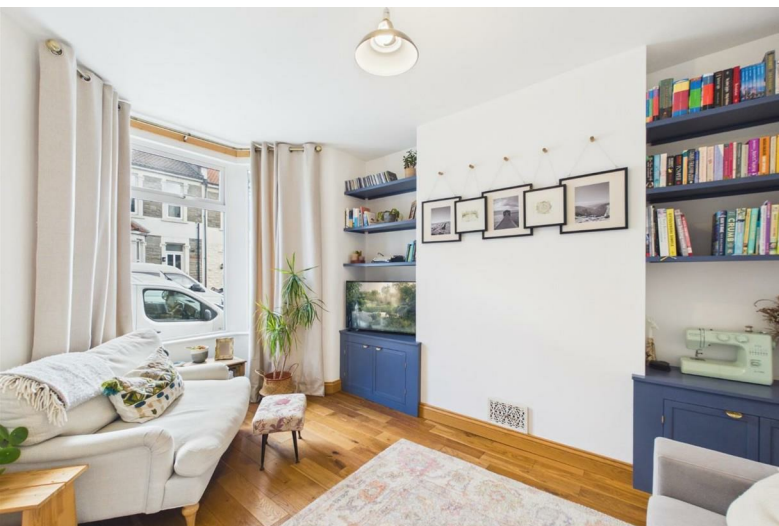


42 Avon Park
, Bristol, BS5 9RS

Asking price **£365,000**



42 Avon Park



Description

Welcome to this 2 bedroom period home nestled away in Redfield and only a stones throw away from Netham Park. Close to all the cafes, independents shops and amenities Church Road has to offer and boasting good transport links via buses, the Lawrence Hill train station and cycle paths into the city. Offered with no onward chain, this property is ideal for first time buyers!

Comprising of entrance hallway leading to a lovely open plan living dining area with french doors looking out onto the Westerly facing garden. To the rear of the property you'll find a good sized modern kitchen. Upstairs you'll find two double bedrooms and a modern bathroom.

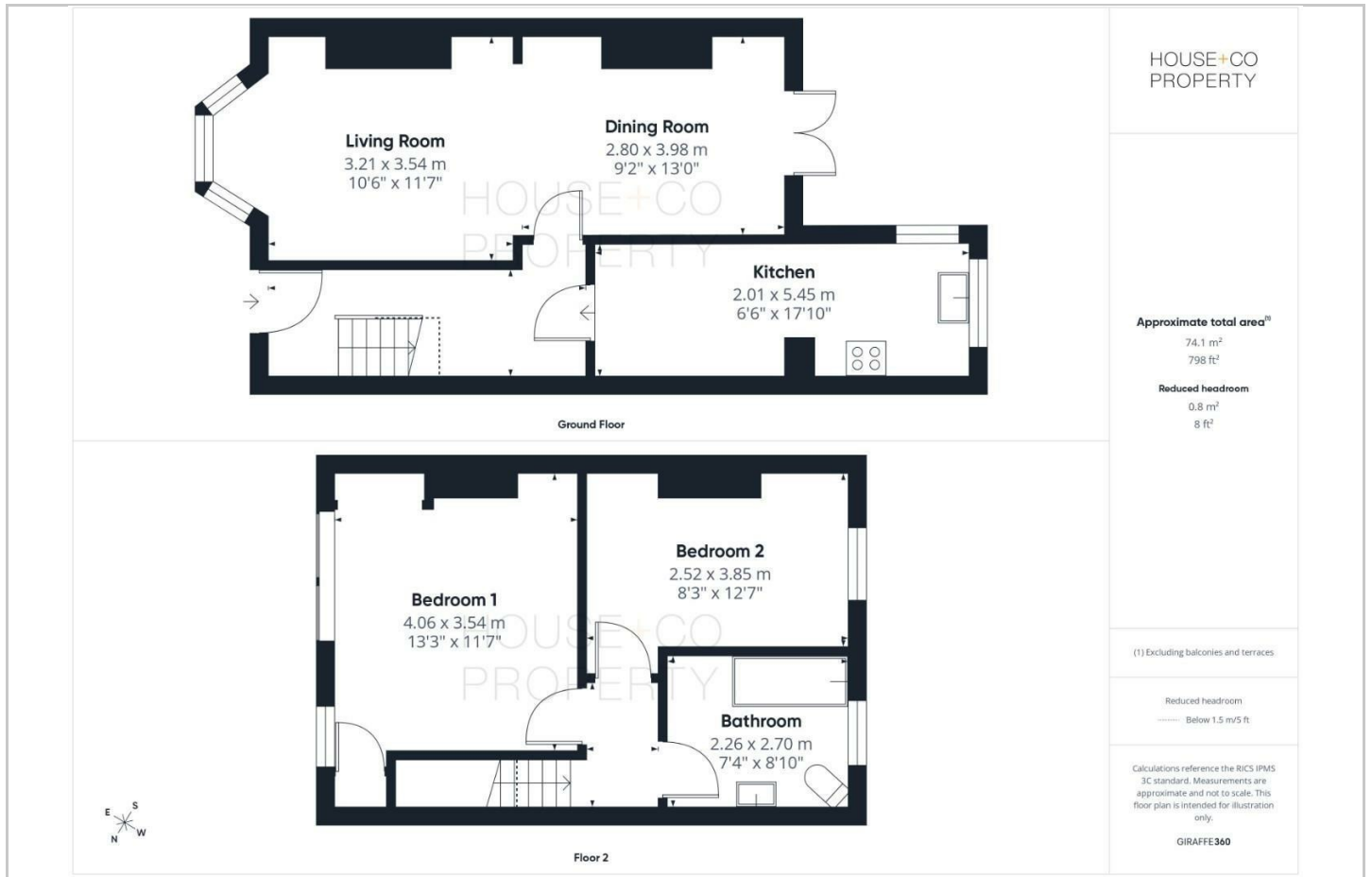
Further benefits include double glazing, gas central heating from a combination boiler and much more! Call now to book a viewing !!

- NEXT TO NETHAM PARK
- WEST FACING GARDEN
- GOOD SIZED KITCHEN
- MODERN BATHROOM
- NO CHAIN !!
- 2 DOUBLE BEDROOMS
- OPEN PLAN LIVING / DINING ROOM
- NEAR CHURCH ROAD
- DOUBLE GLAZING

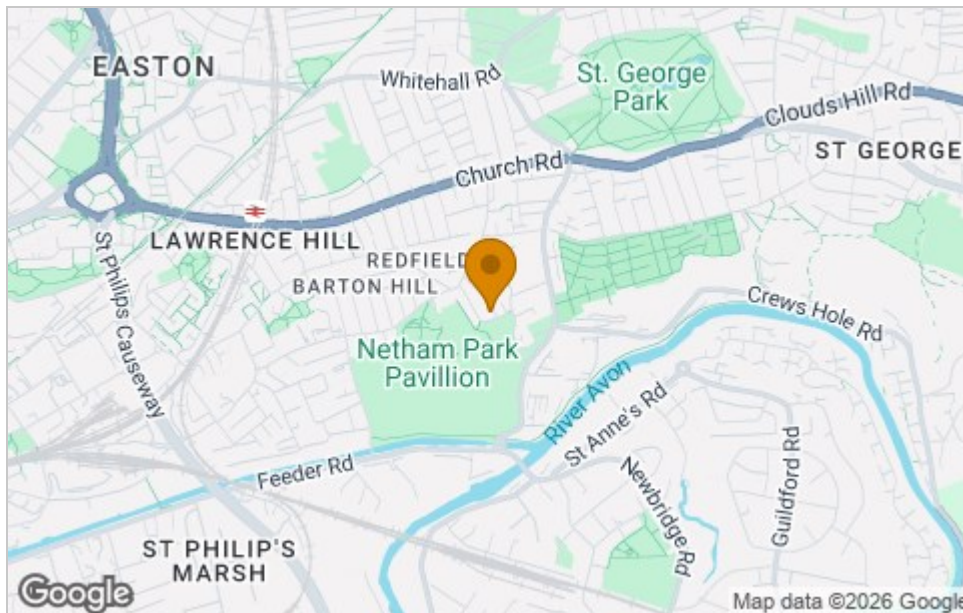




Floor Plan



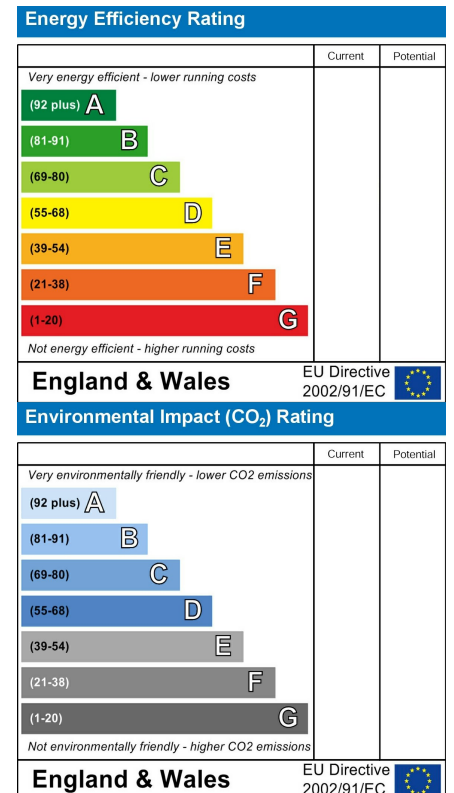
Area Map



Viewing

Please contact our House + Co Property (Sales) Office on 0117 907 0020 if you wish to arrange a viewing appointment for this property or require further information.

Energy Efficiency Graph



These particulars, whilst believed to be accurate are set out as a general outline only for guidance and do not constitute any part of an offer or contract. Intending purchasers should not rely on them as statements of representation of fact, but must satisfy themselves by inspection or otherwise as to their accuracy. No person in this firm's employment has the authority to make or give any representation or warranty in respect of the property.